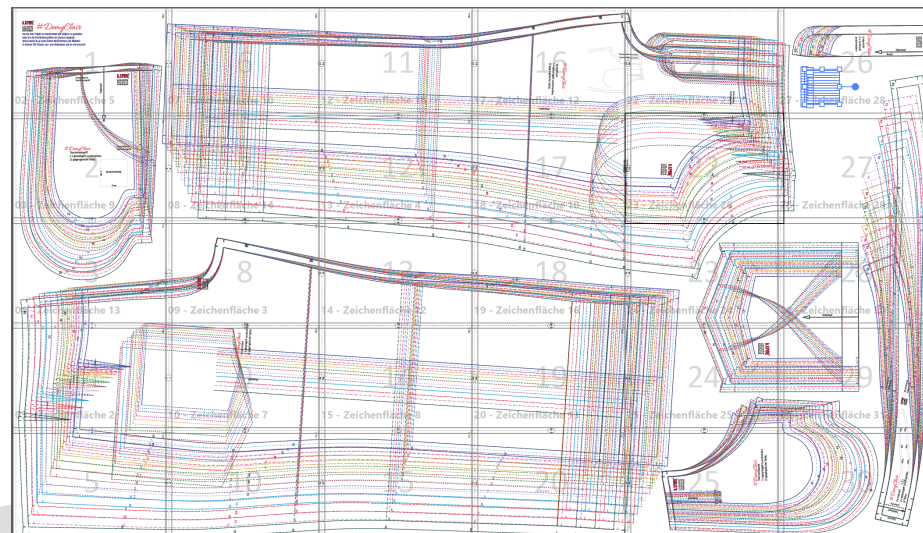
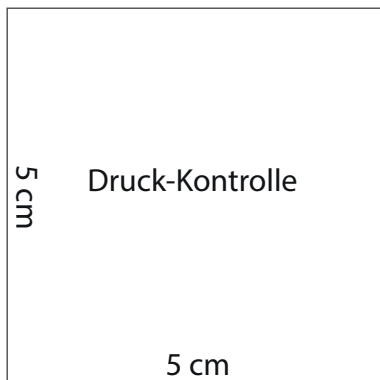


k.triny★

LINGERIE
DESSOUS
SWIMWEAR

Um dir dein Projekt so komfortabel wie möglich zu gestalten,
habe ich die Konfektionsgrößen als Ebenen angelegt.
Diese kannst du je nach deinen Bedürfnissen und Belieben
in deinem PDF Reader aus- und einblenden, wie du sie brauchst.

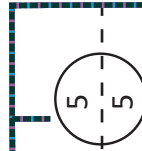


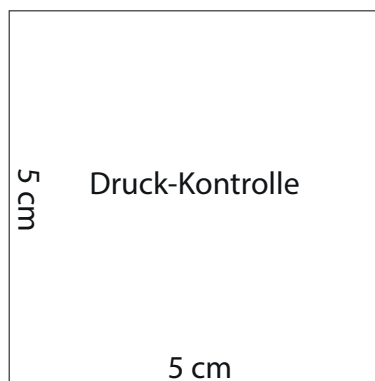
Kontrollzwick
Tascheingriff

Fadenlauf

k.triny★

LINGERIE
DESSOUS
SWIMWEAR





V3

#DemyClair

Taschenbeutel

1 x gespiegelt zuschneiden

Futterstoff

1 x gespiegelt zuschneiden

Transparenter Stoff

(2 x 2 gegengleiche Teile)

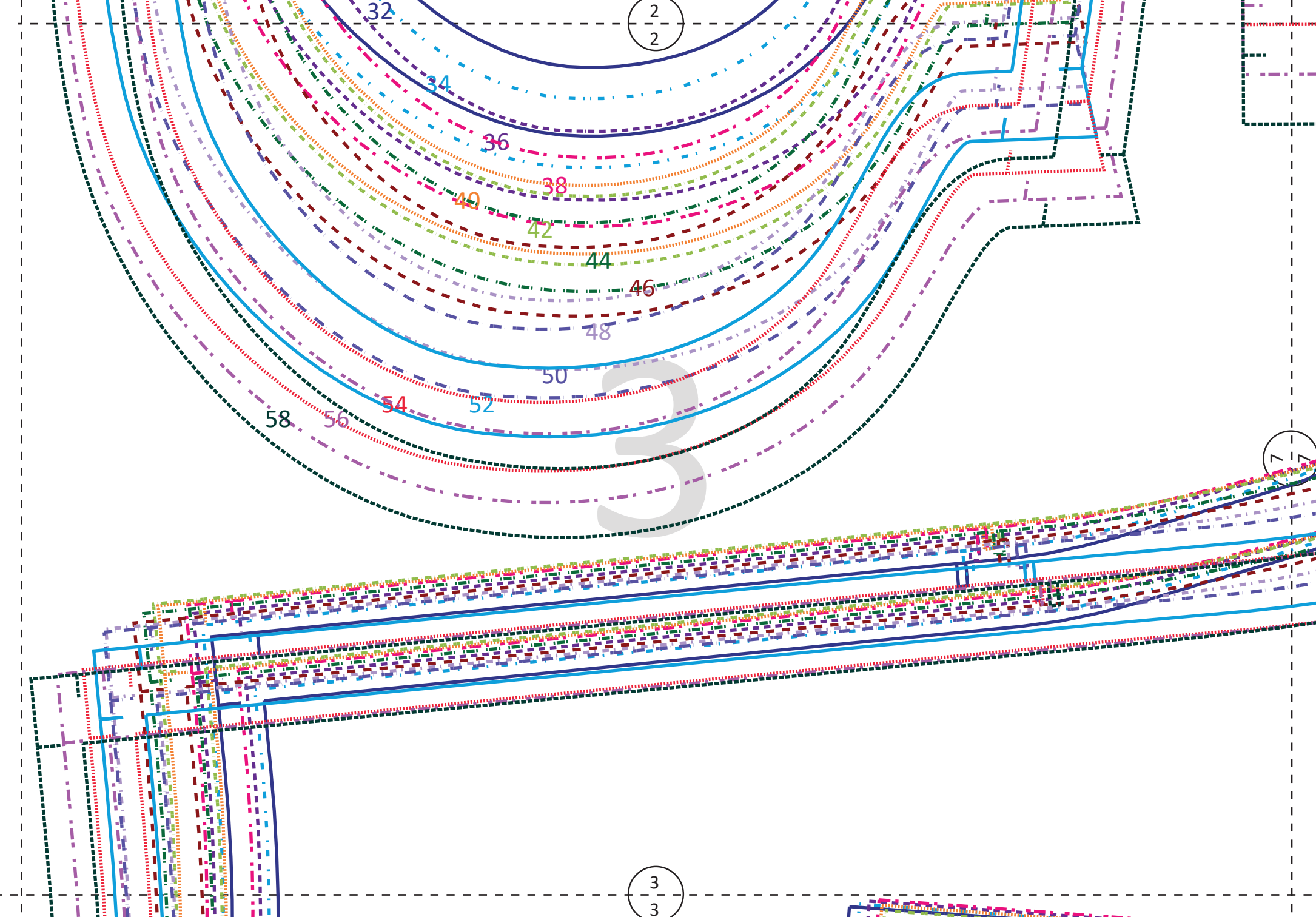
Kontrollzwick
Tascheneingriff

2

2

6

6



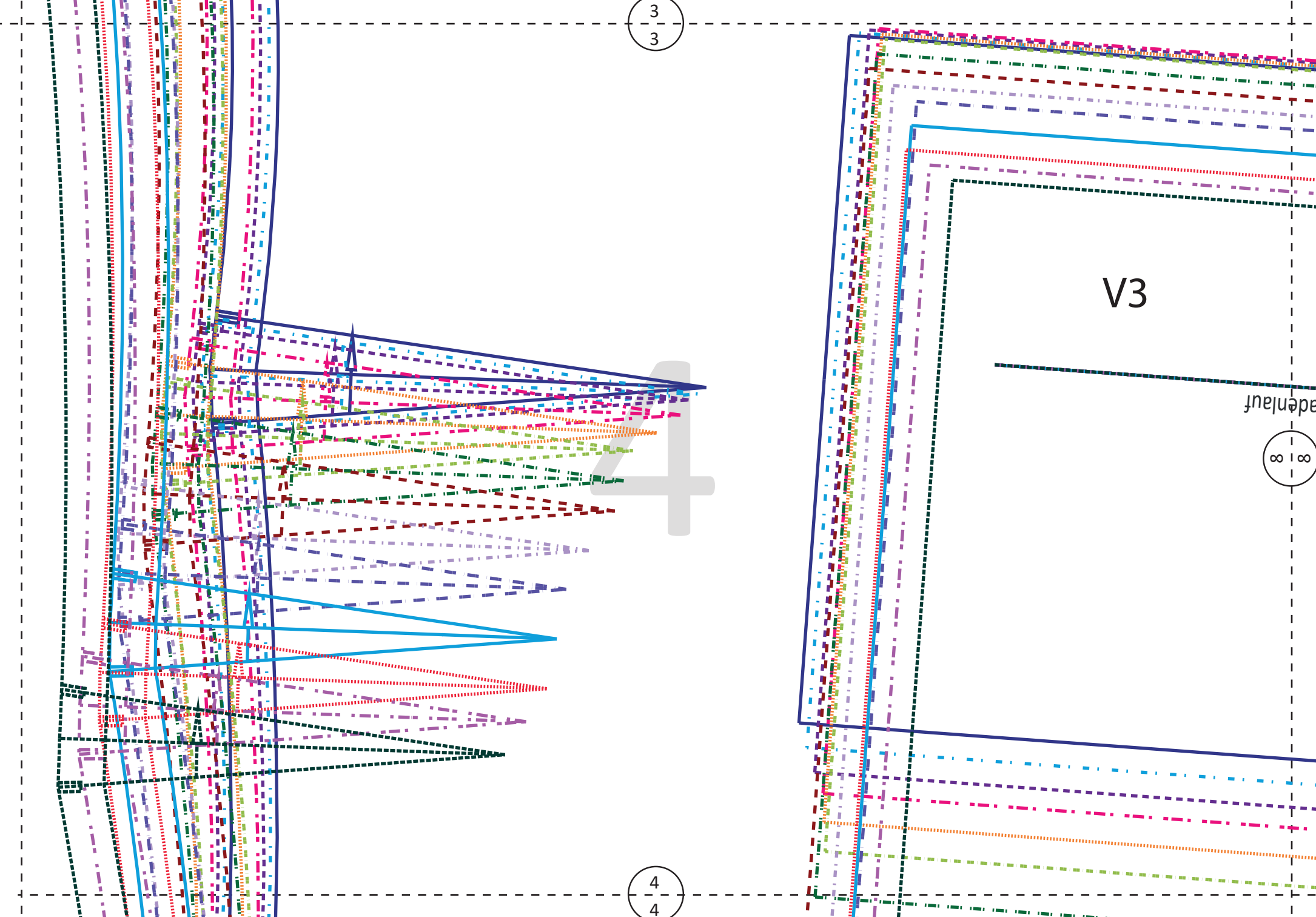
3
3

4
4

∞ | ∞

V3

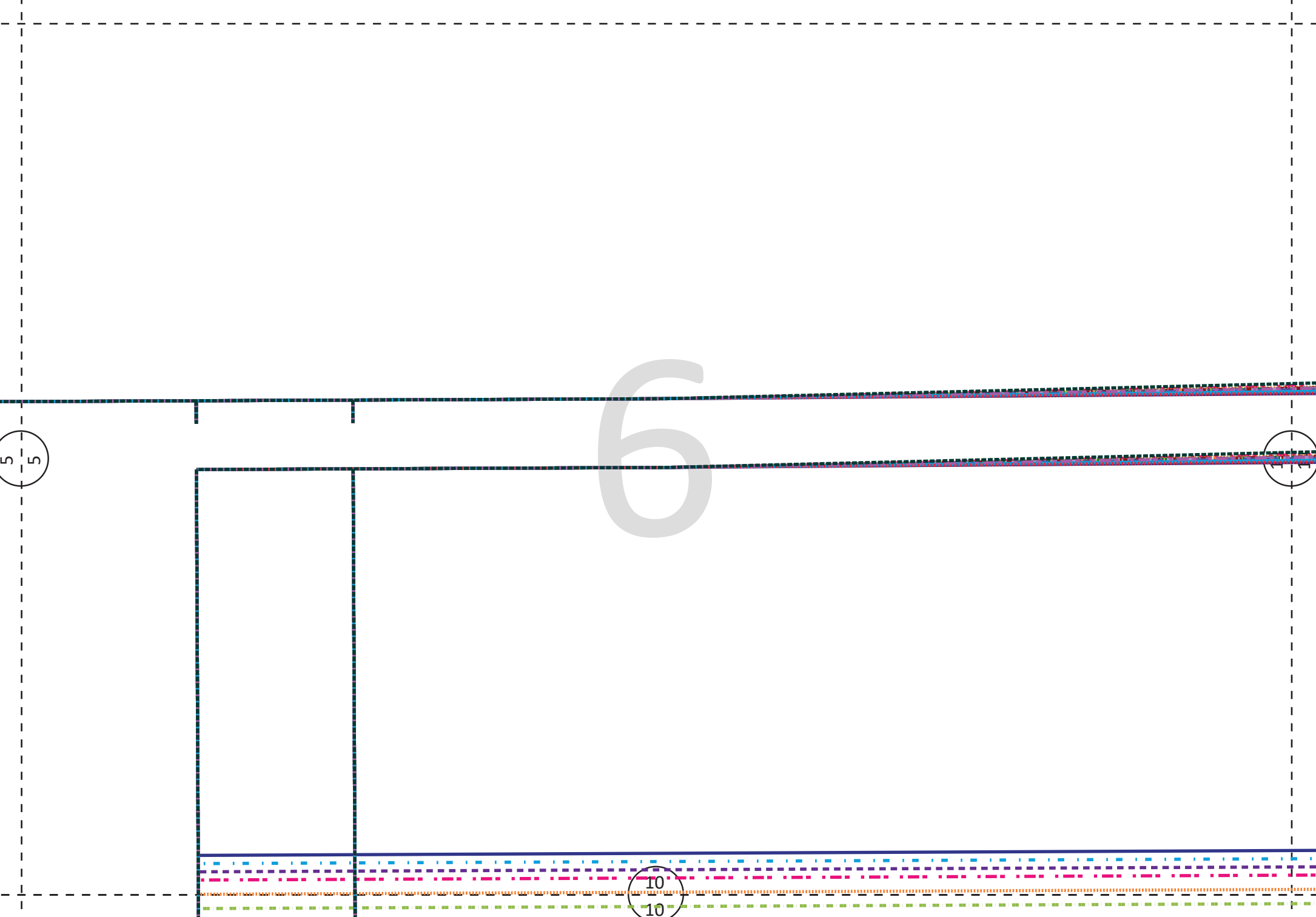
adenlauf

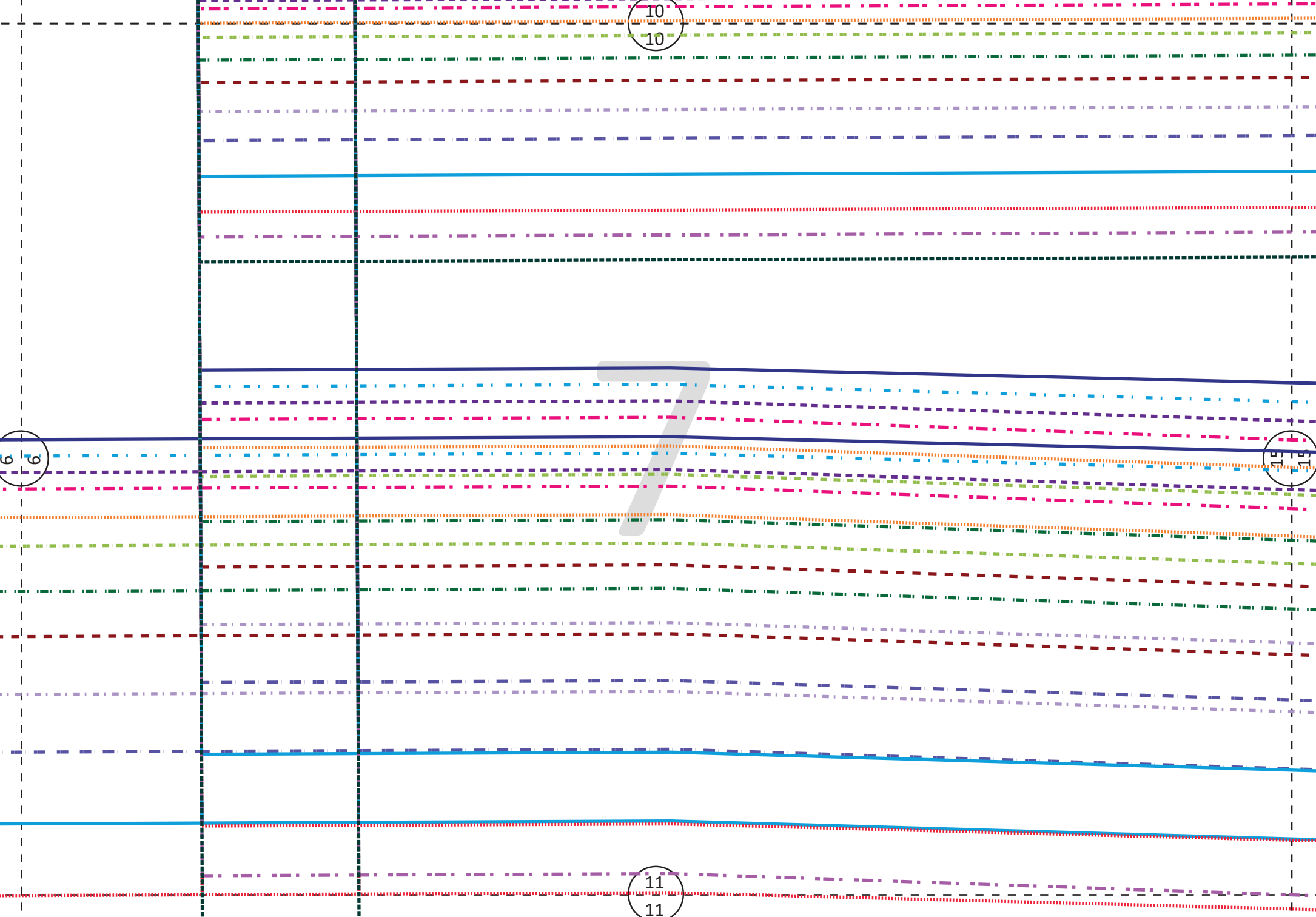


4
4

5

9
9



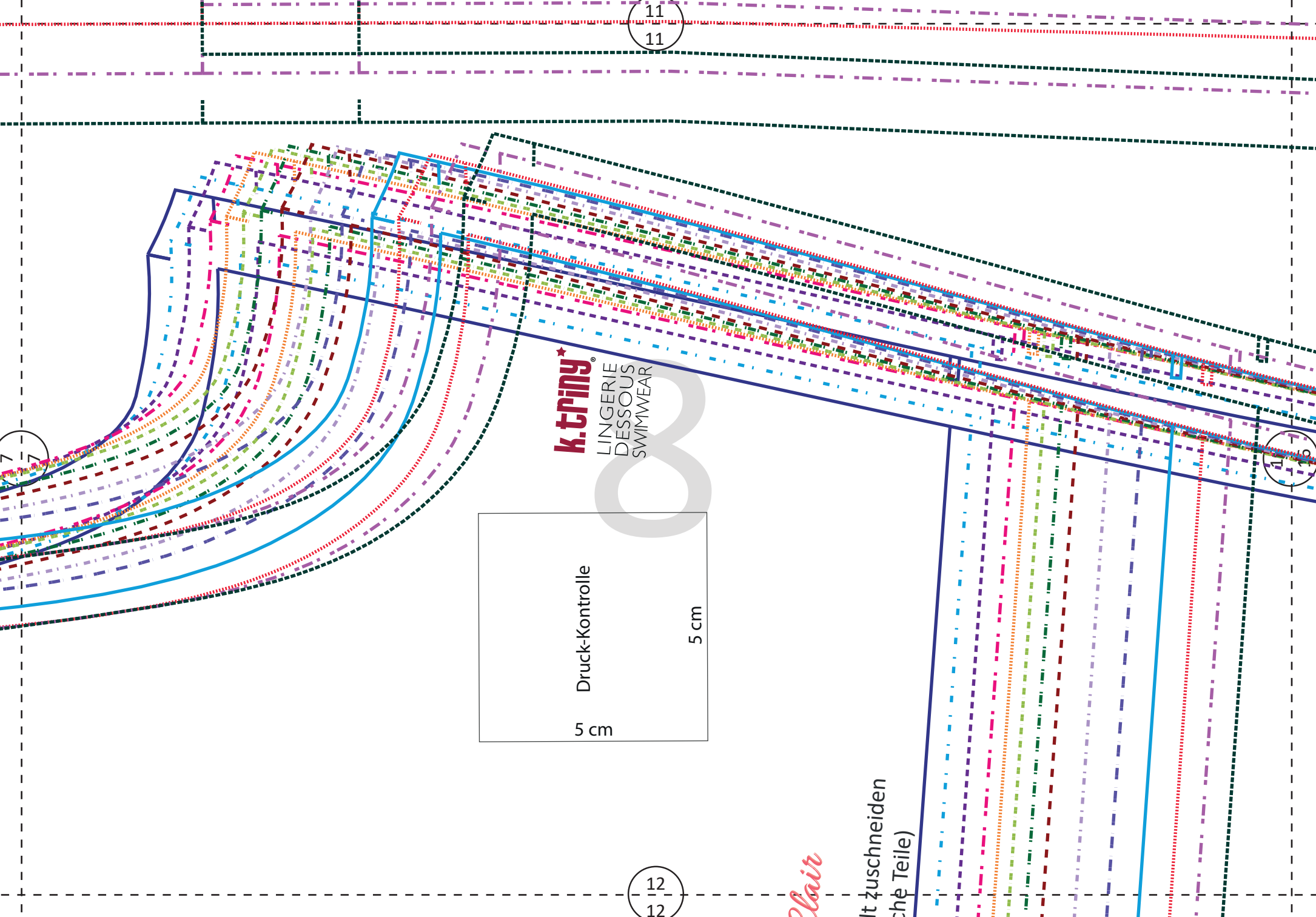


6 6

10
10

10
10

11
11



k.tiny
LINGERIE
DESSOUS
SWIMWEAR

Druck-Kontrolle

5 cm

5 cm

clair

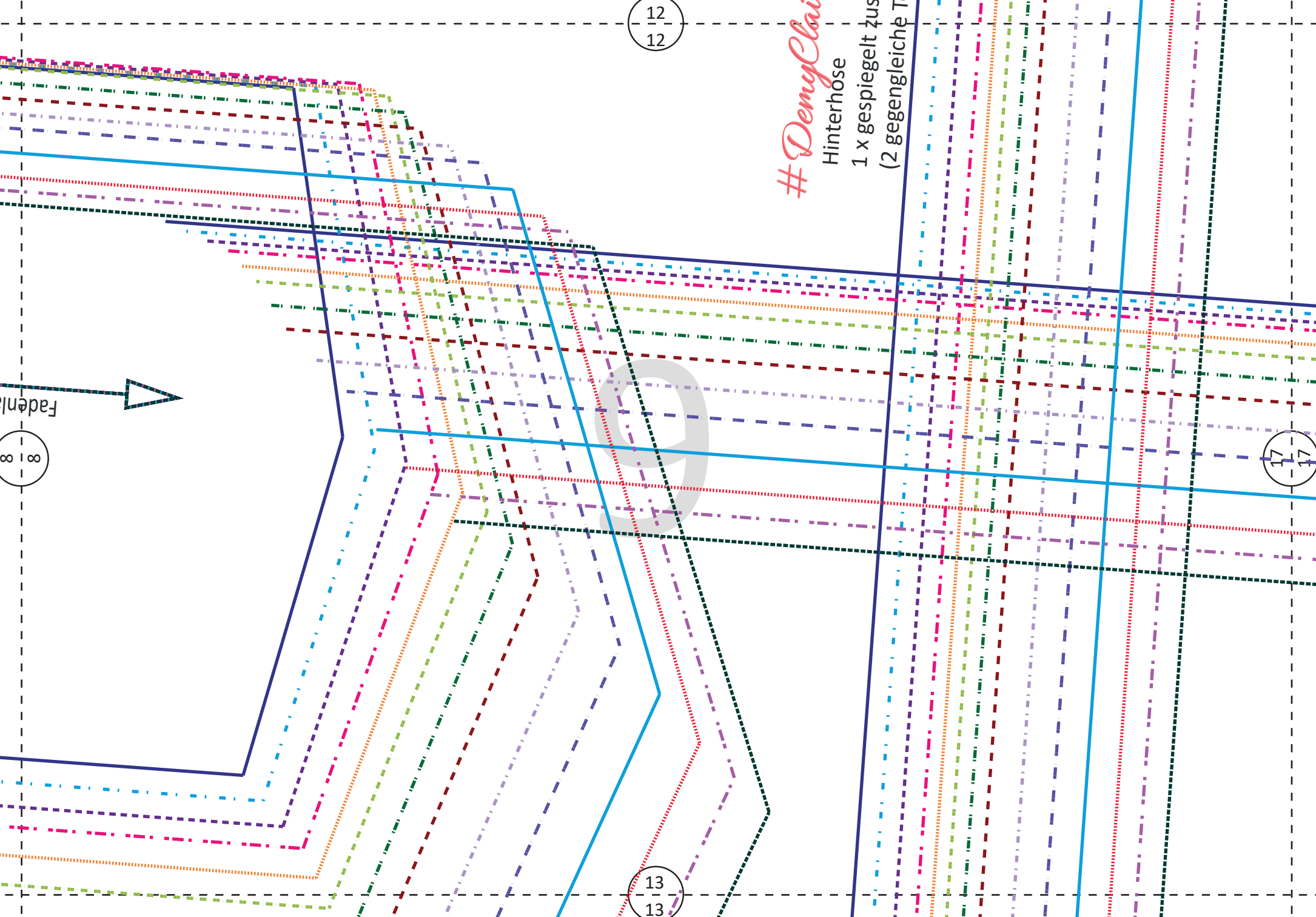
It zuschneiden
(die Teile)

12
12

11
11

7
7

11
16



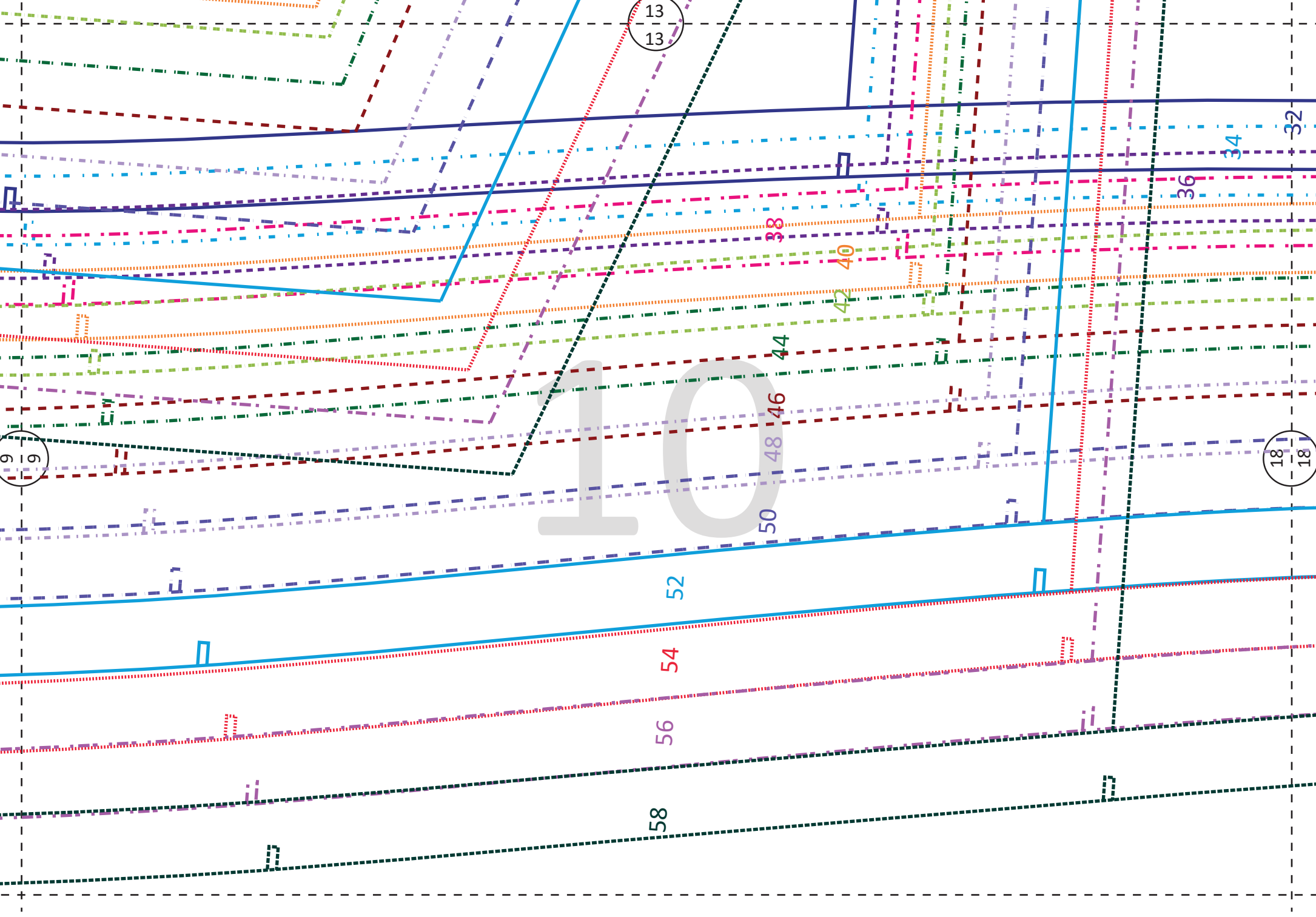
#DemyClair
Hinterhose
1 x gespiegelt zus
(2 gegengeleichte T)

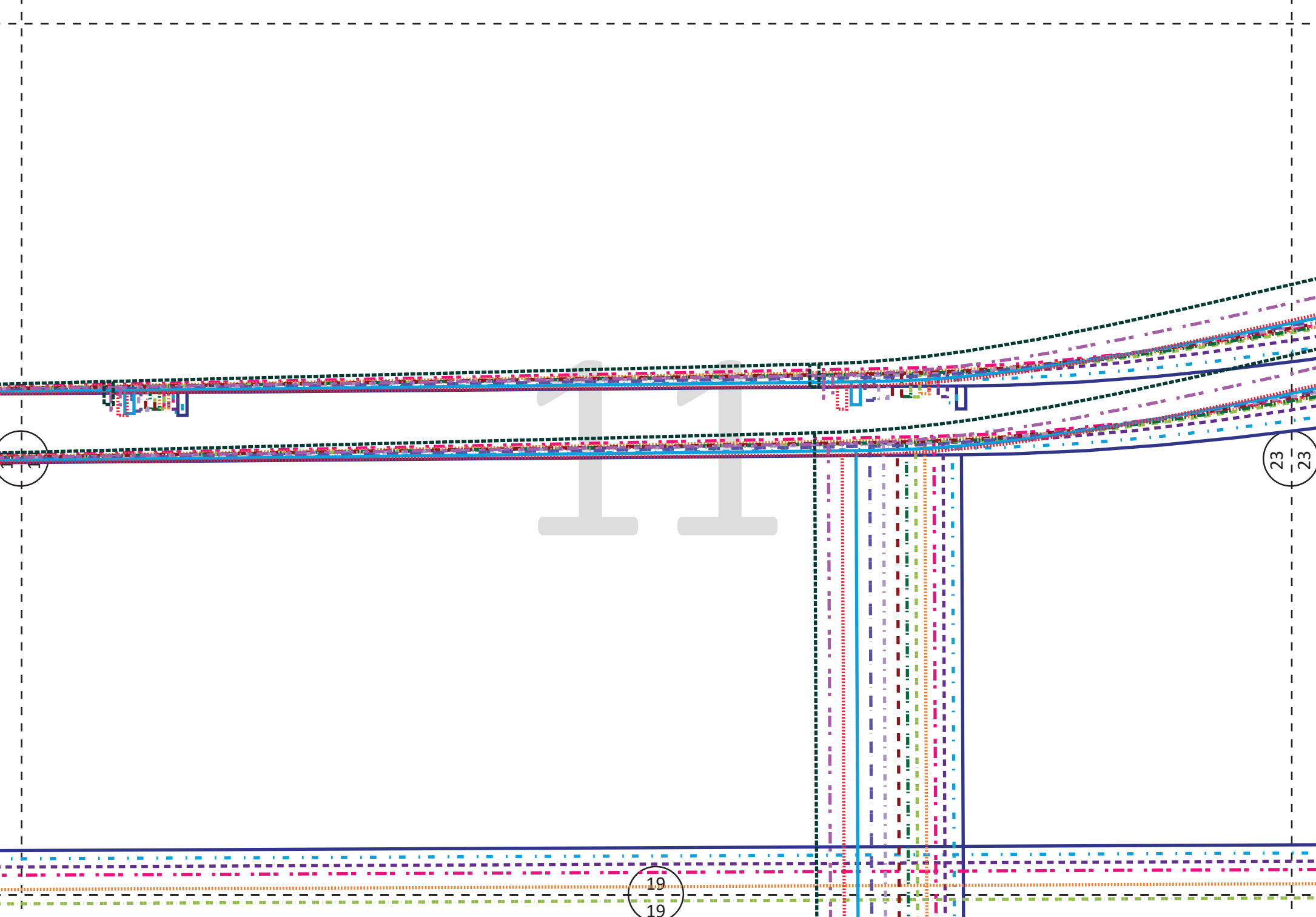
Fadenlauf
∞ ∞

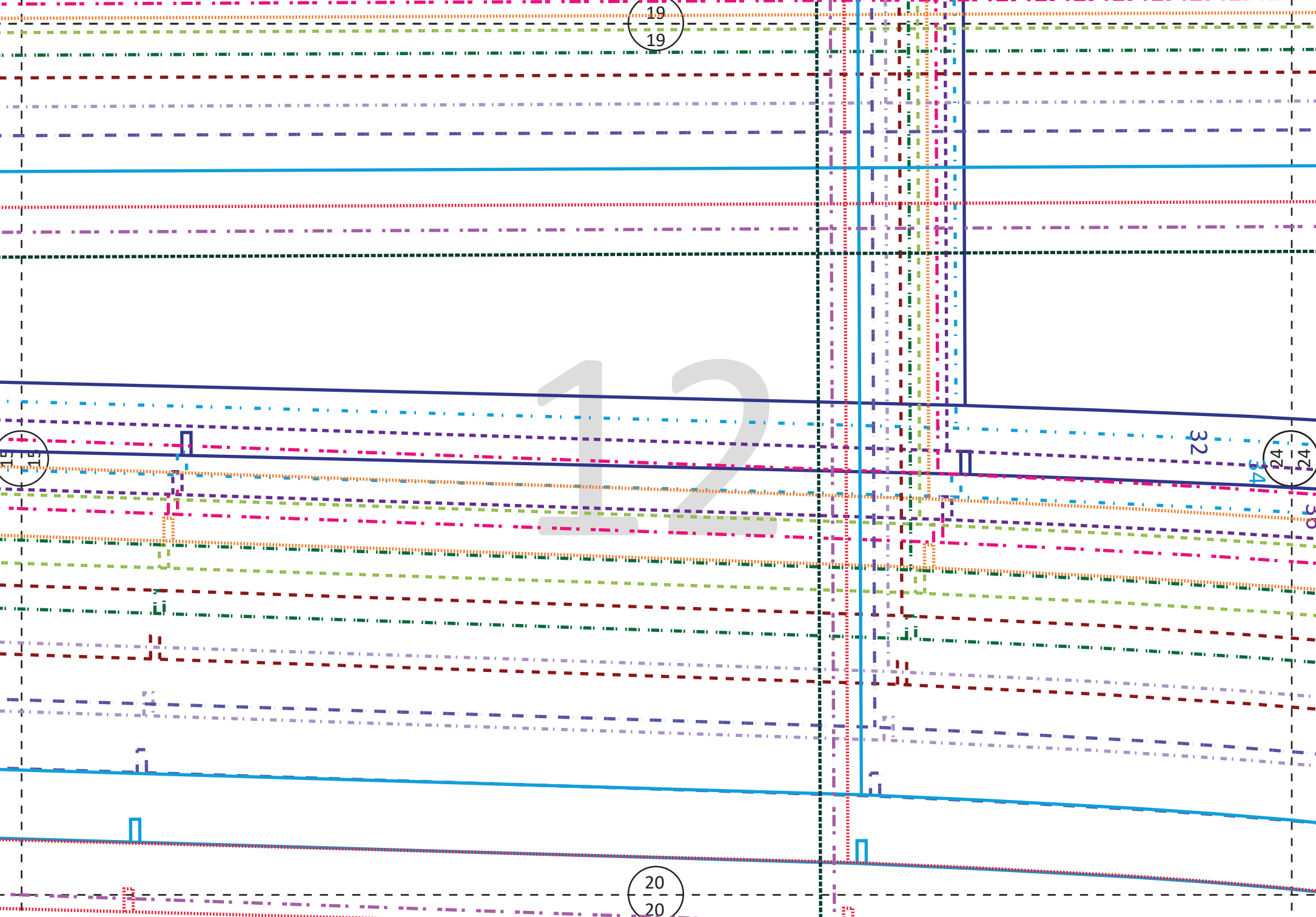
12
12

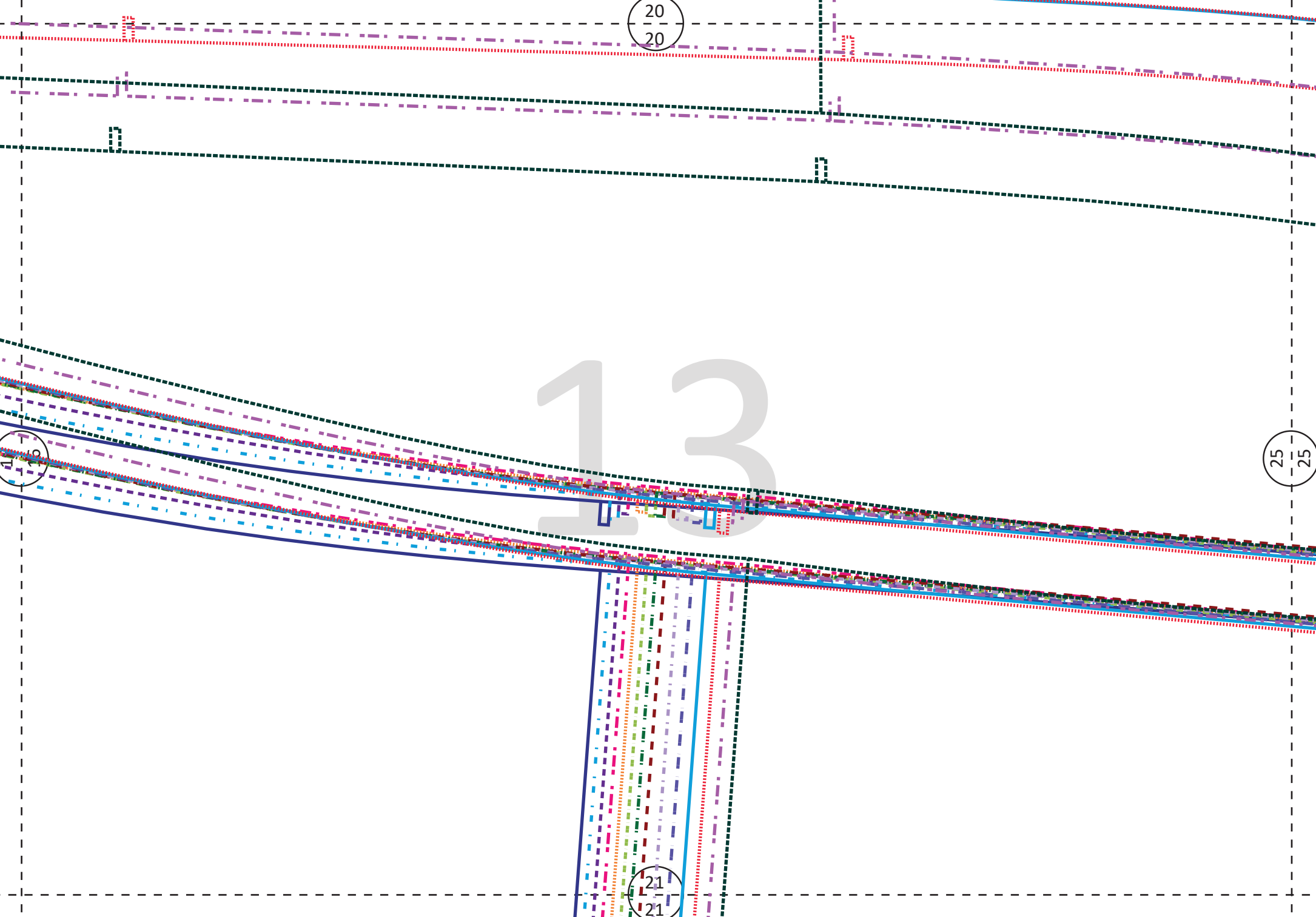
17
17

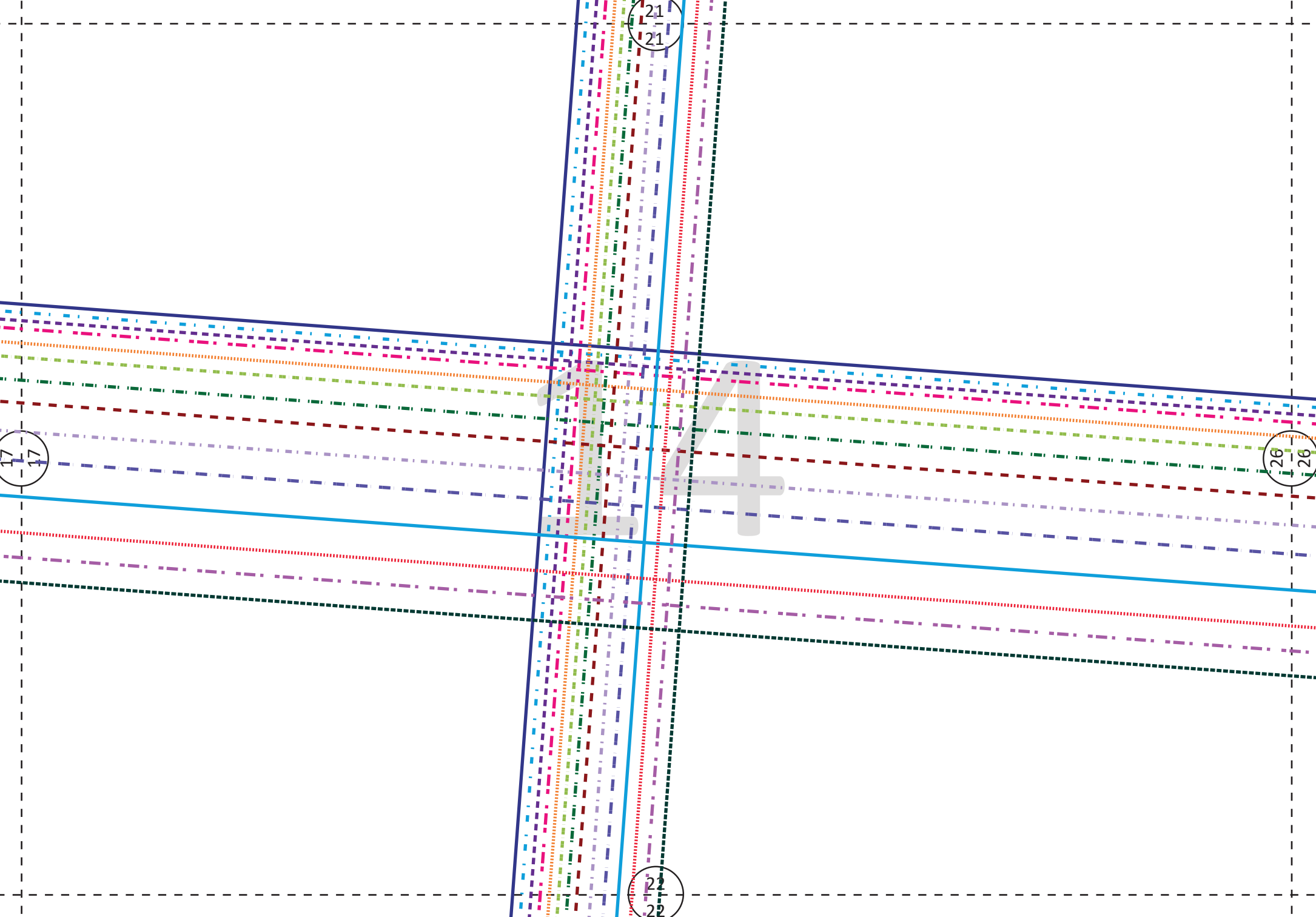
13
13

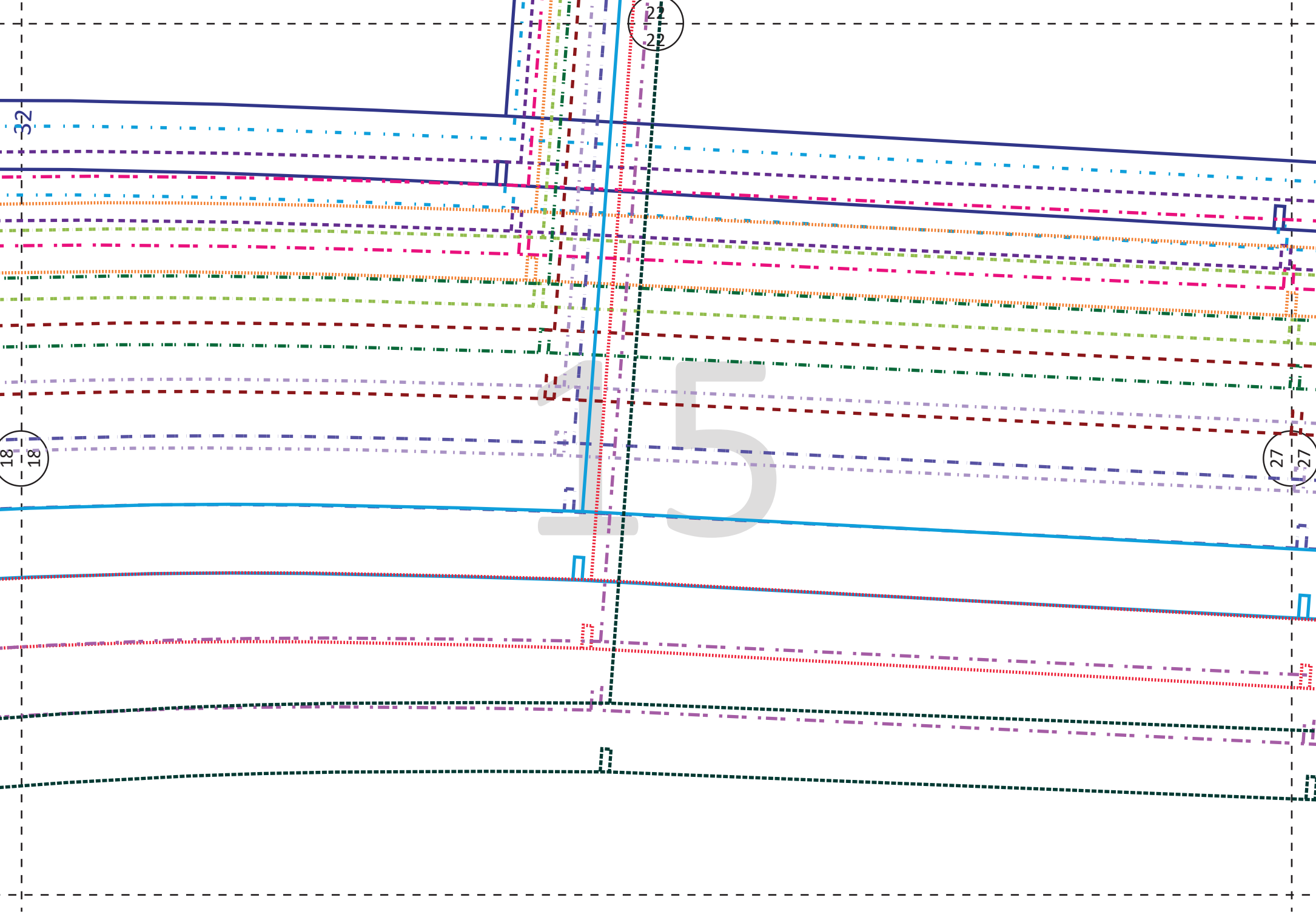










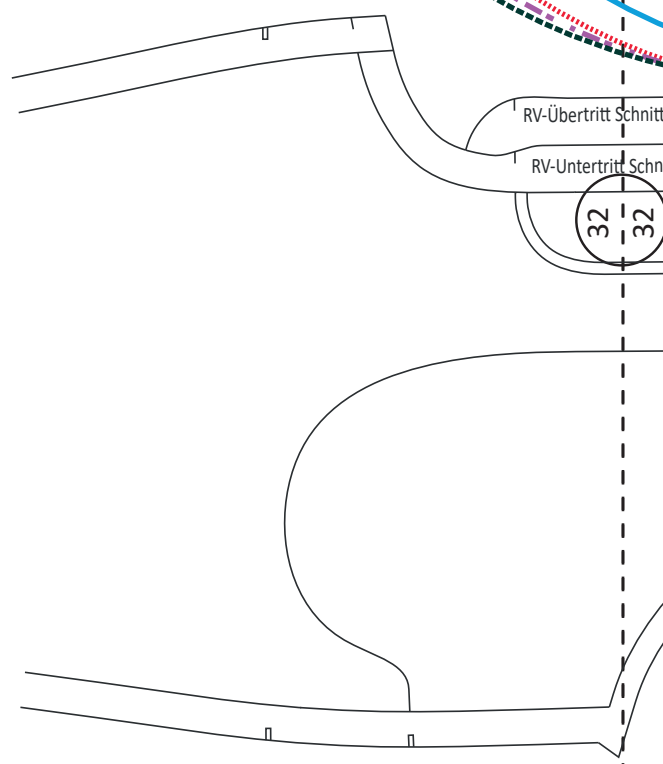


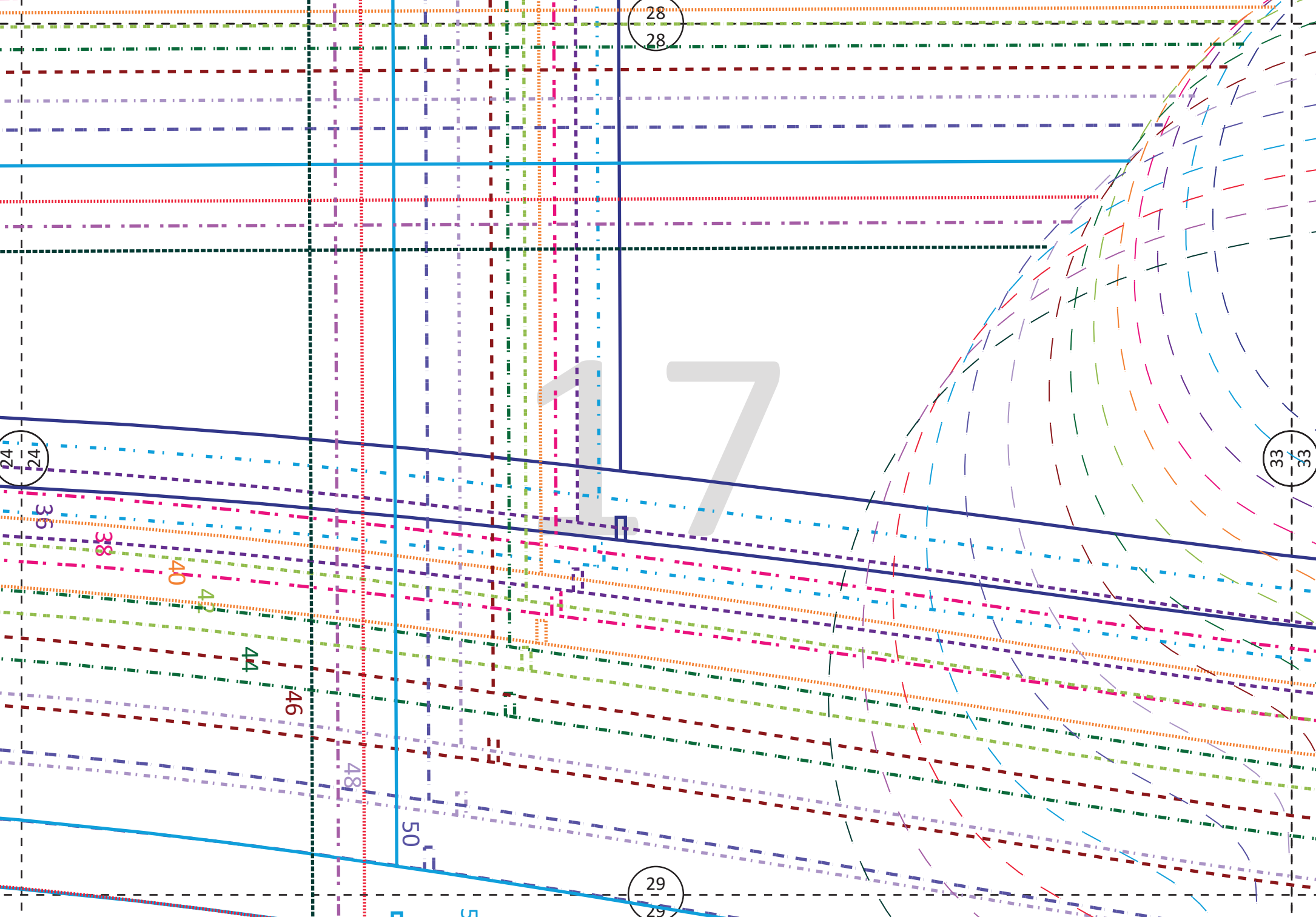
23
23

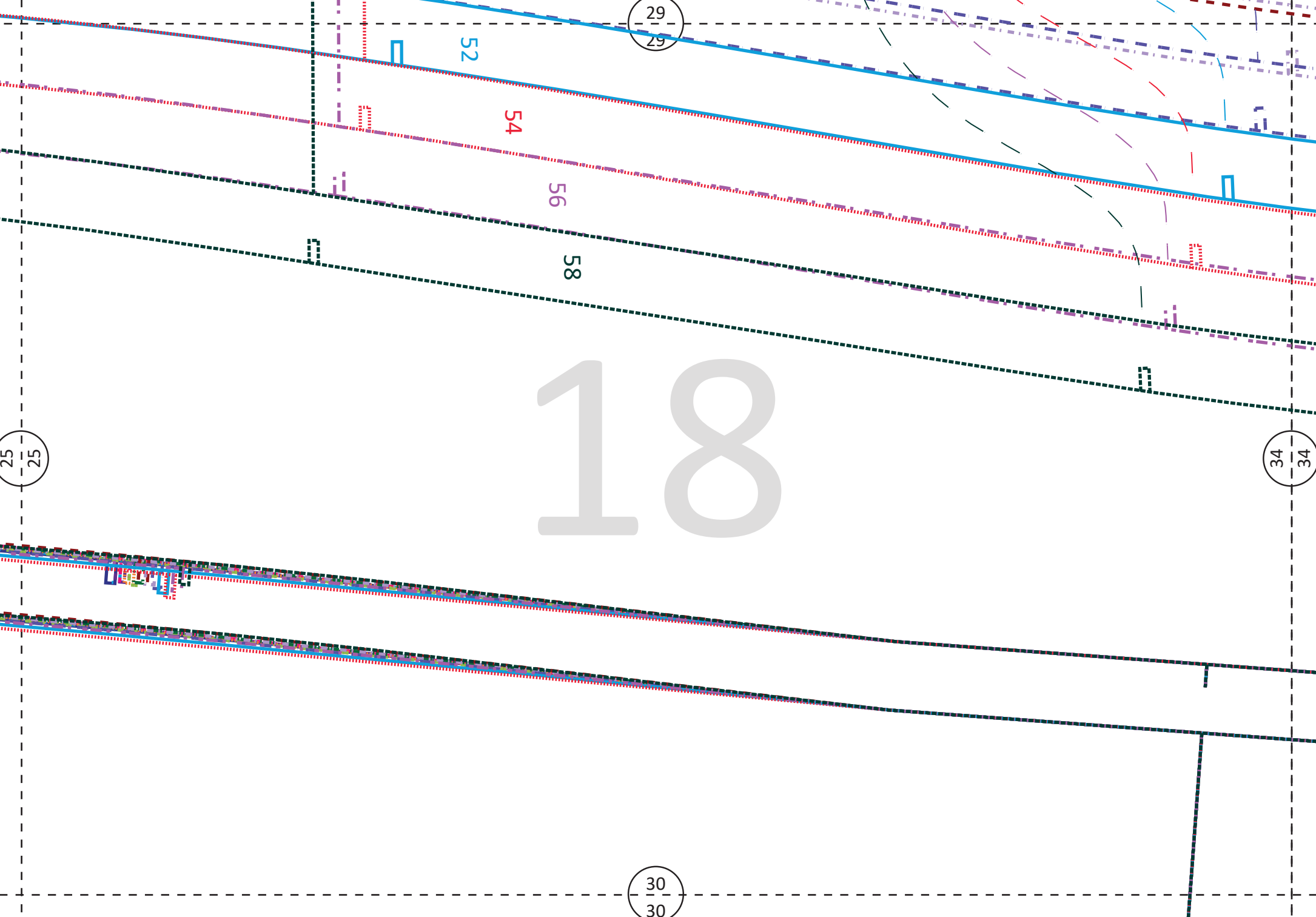
16

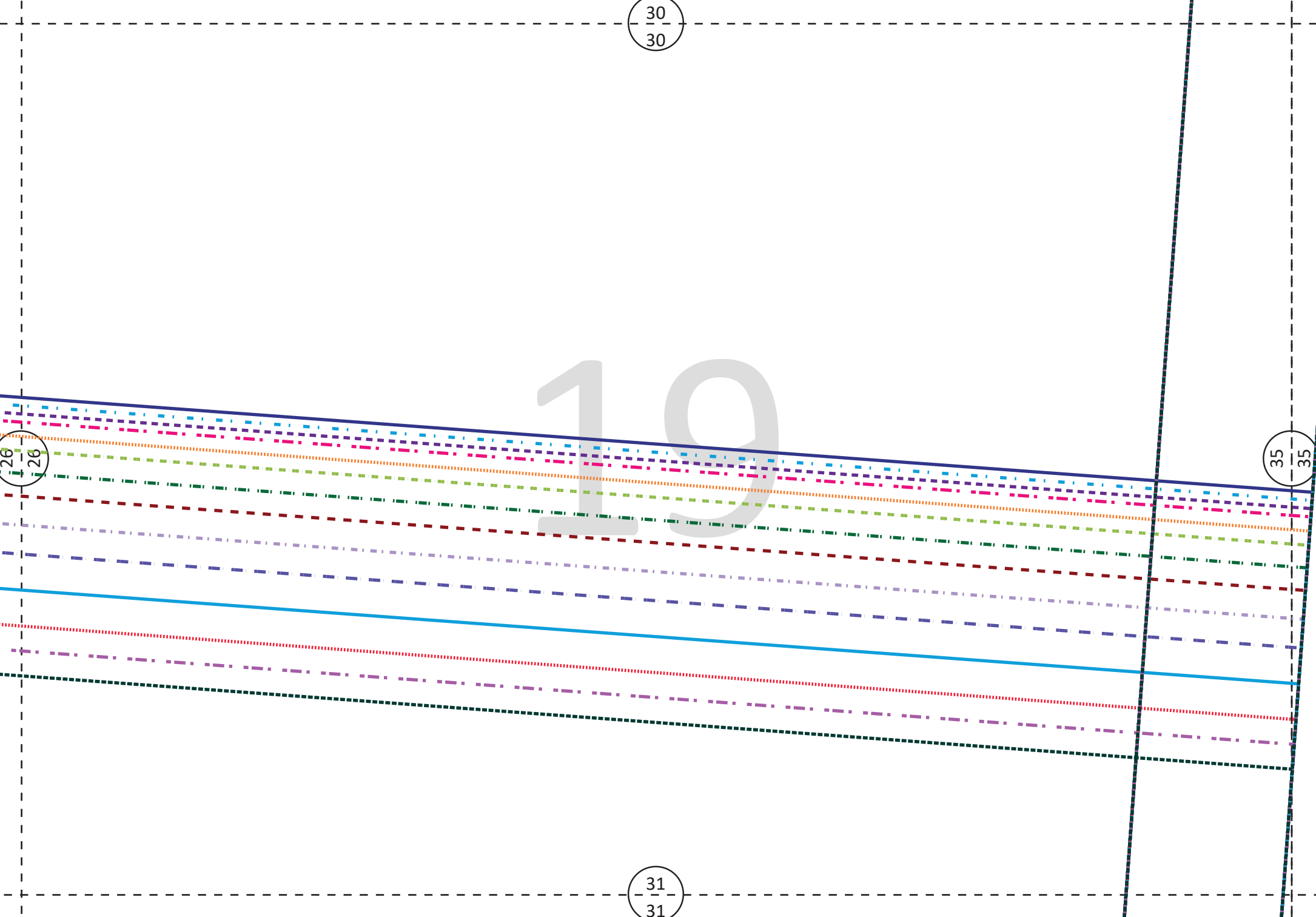
#DennyClait
Vorderhose
1 x gespiegelt zuschneiden
(2 gegengleiche Teile)

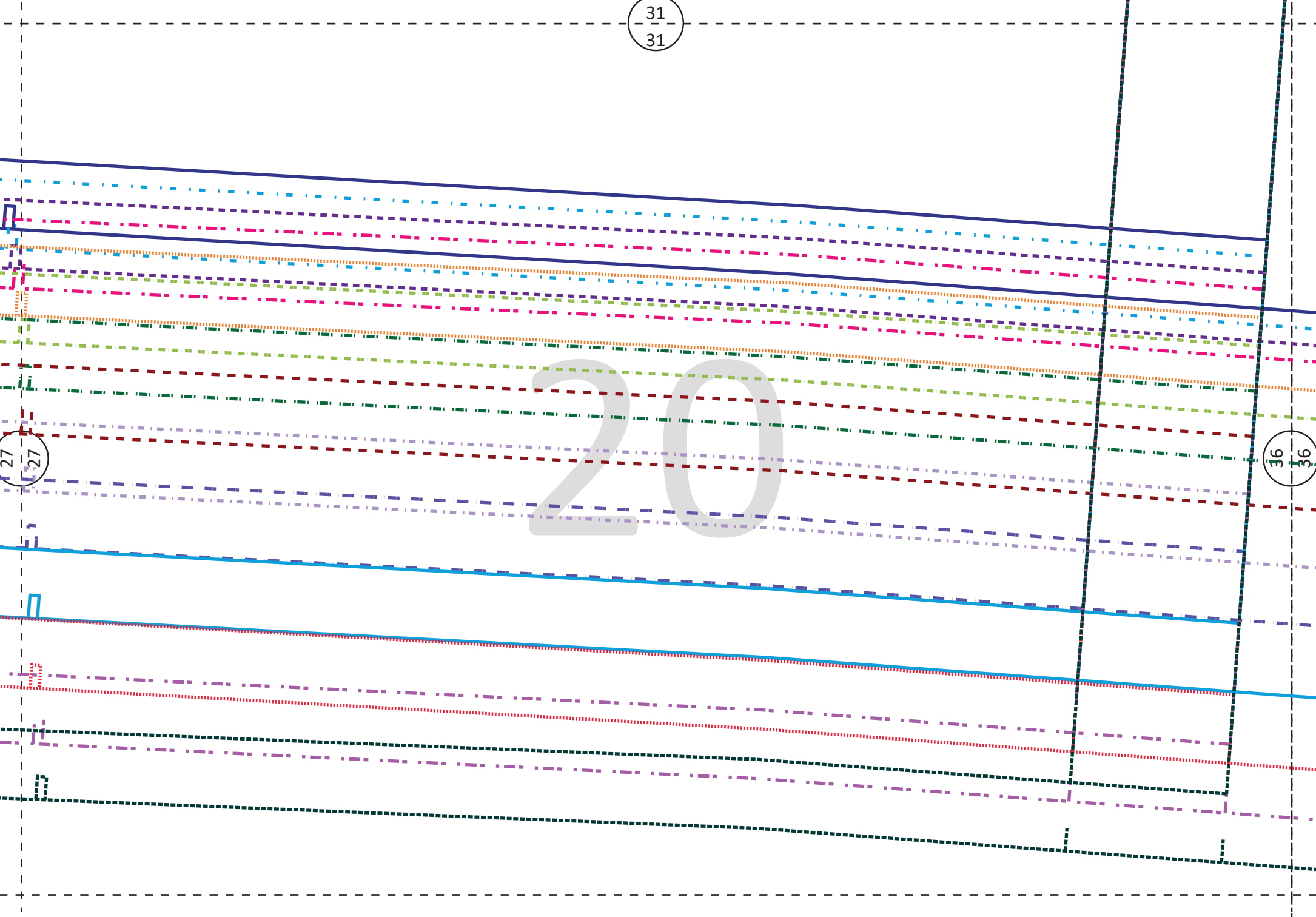
28
28





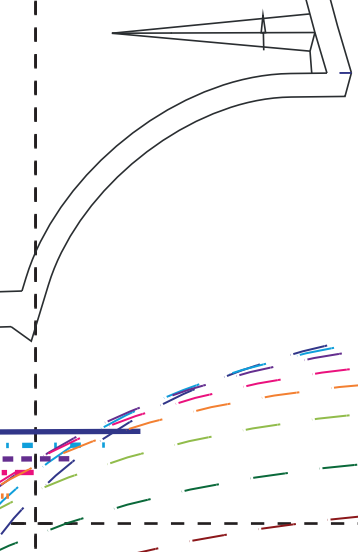






Schnittlinie rechte Vorderhose
Schnittlinie linke Vorderhose

32
32



V3

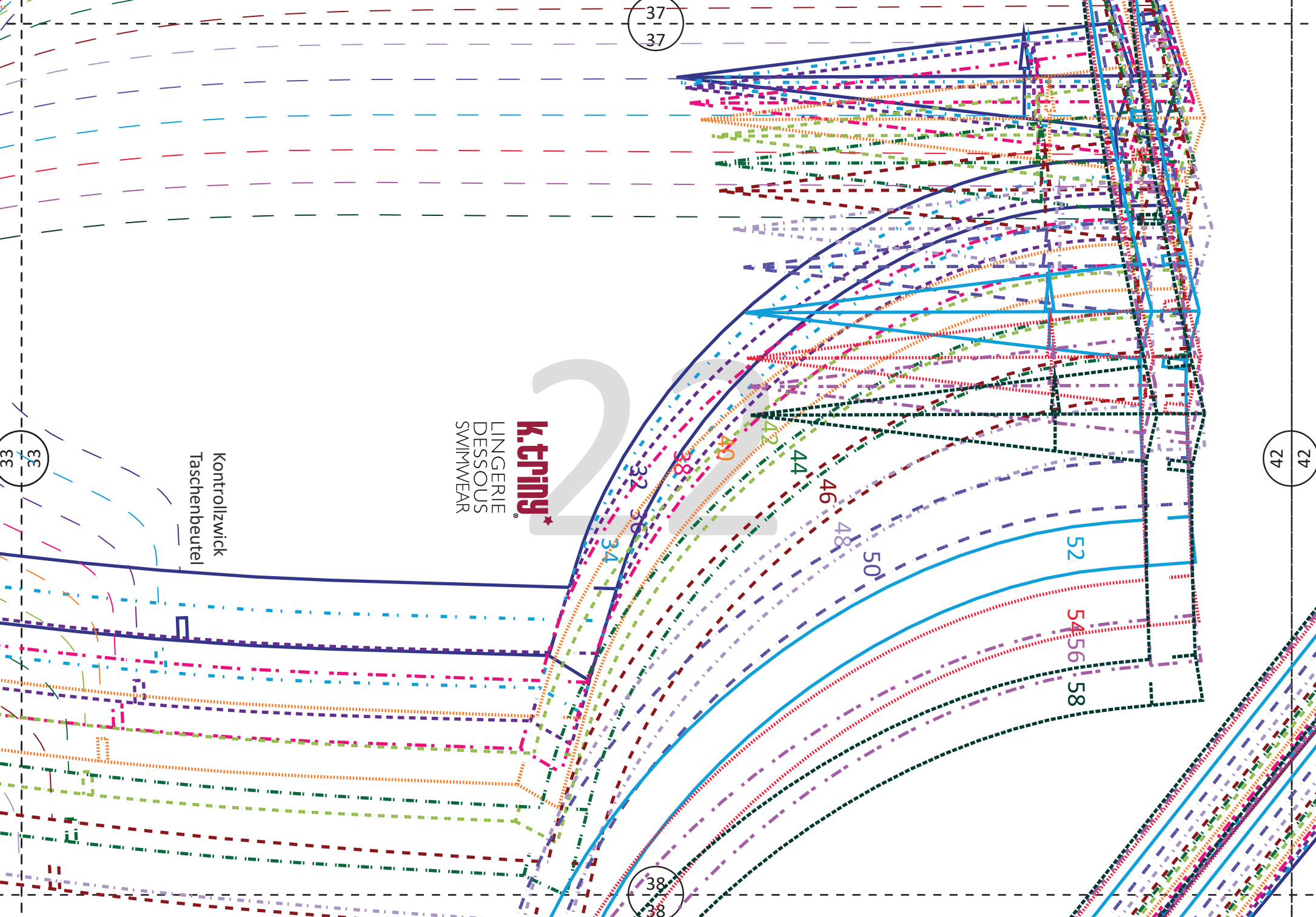
Fadenlauf

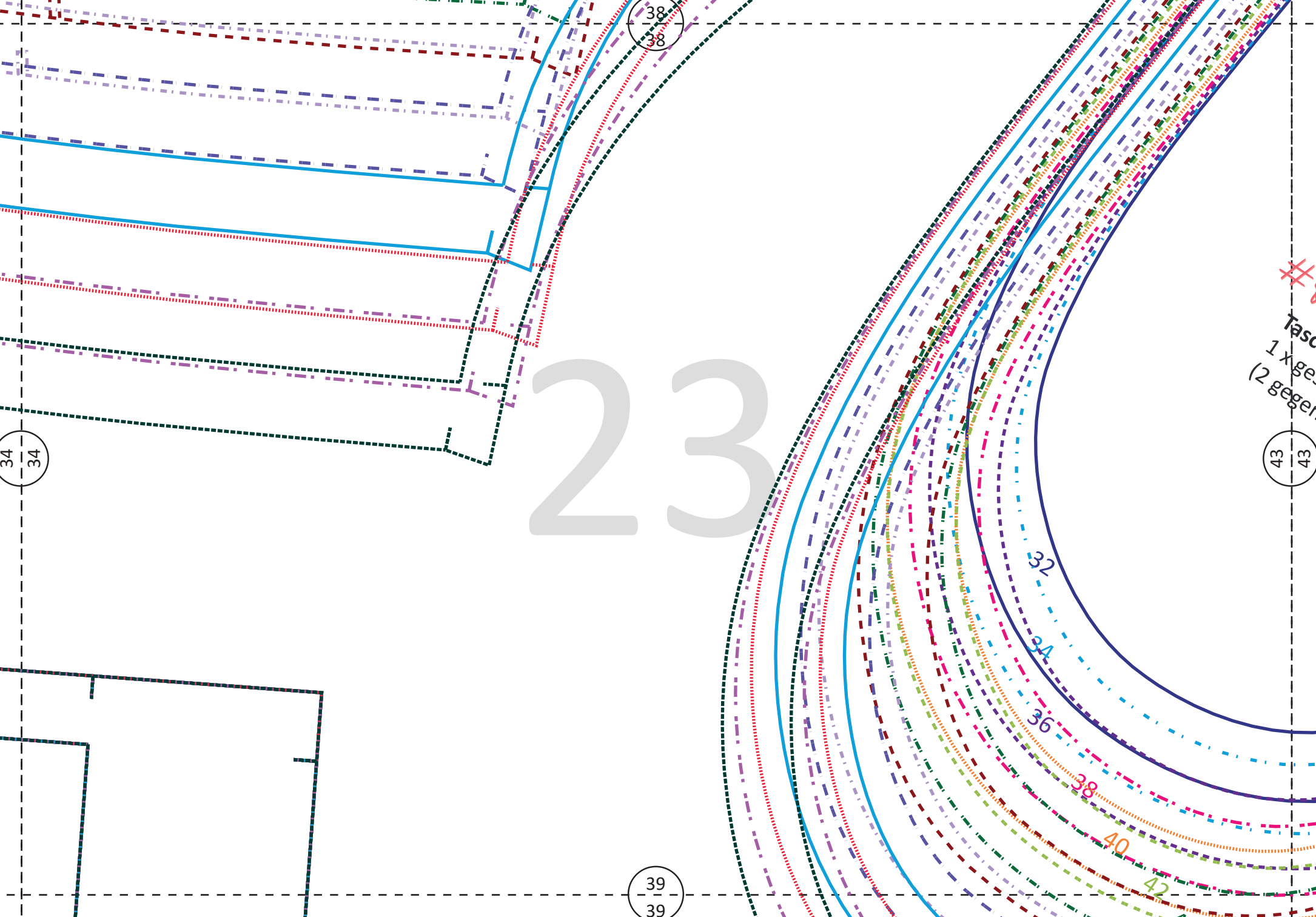


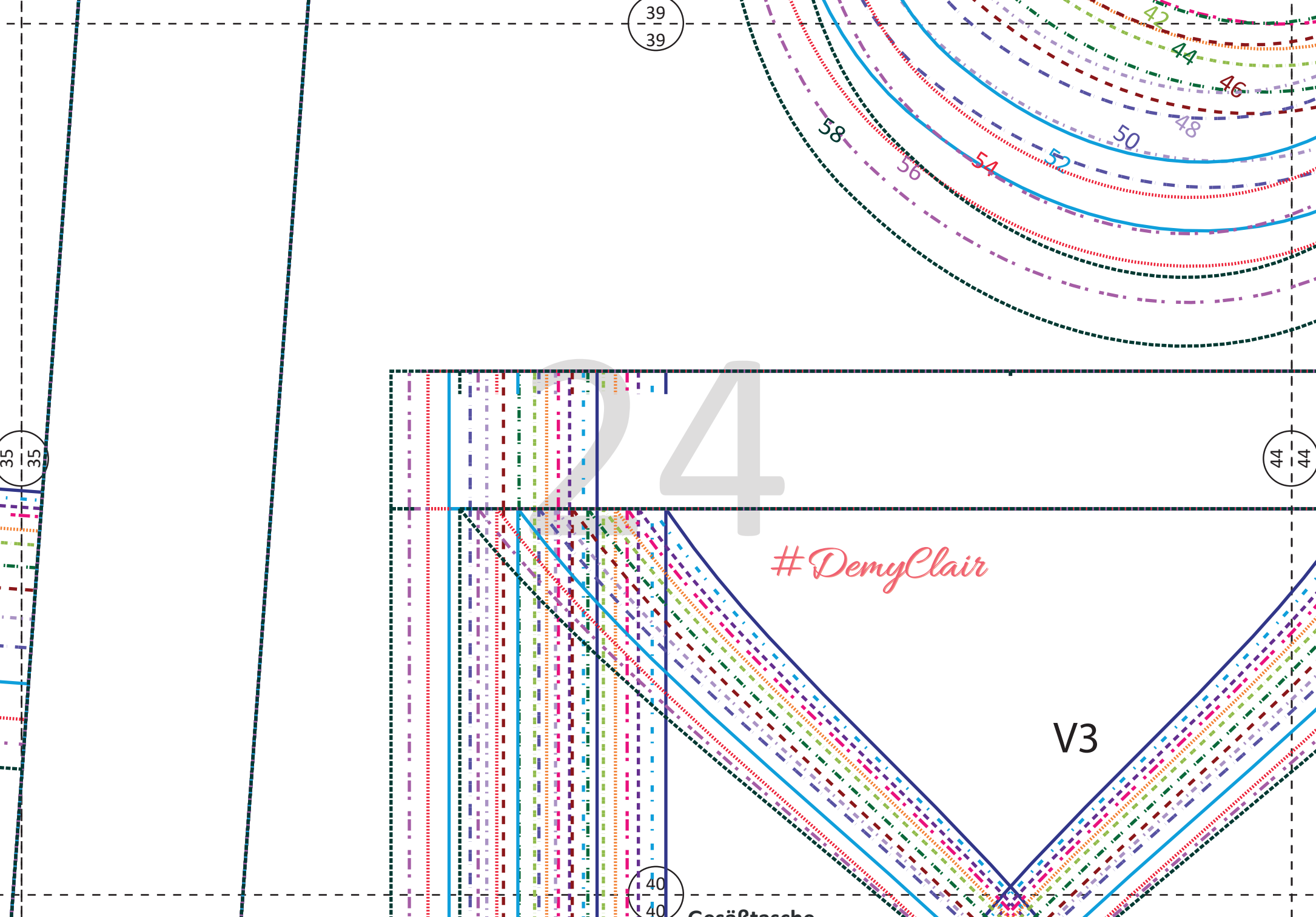
Kontrollzwick
Taschenbeutel

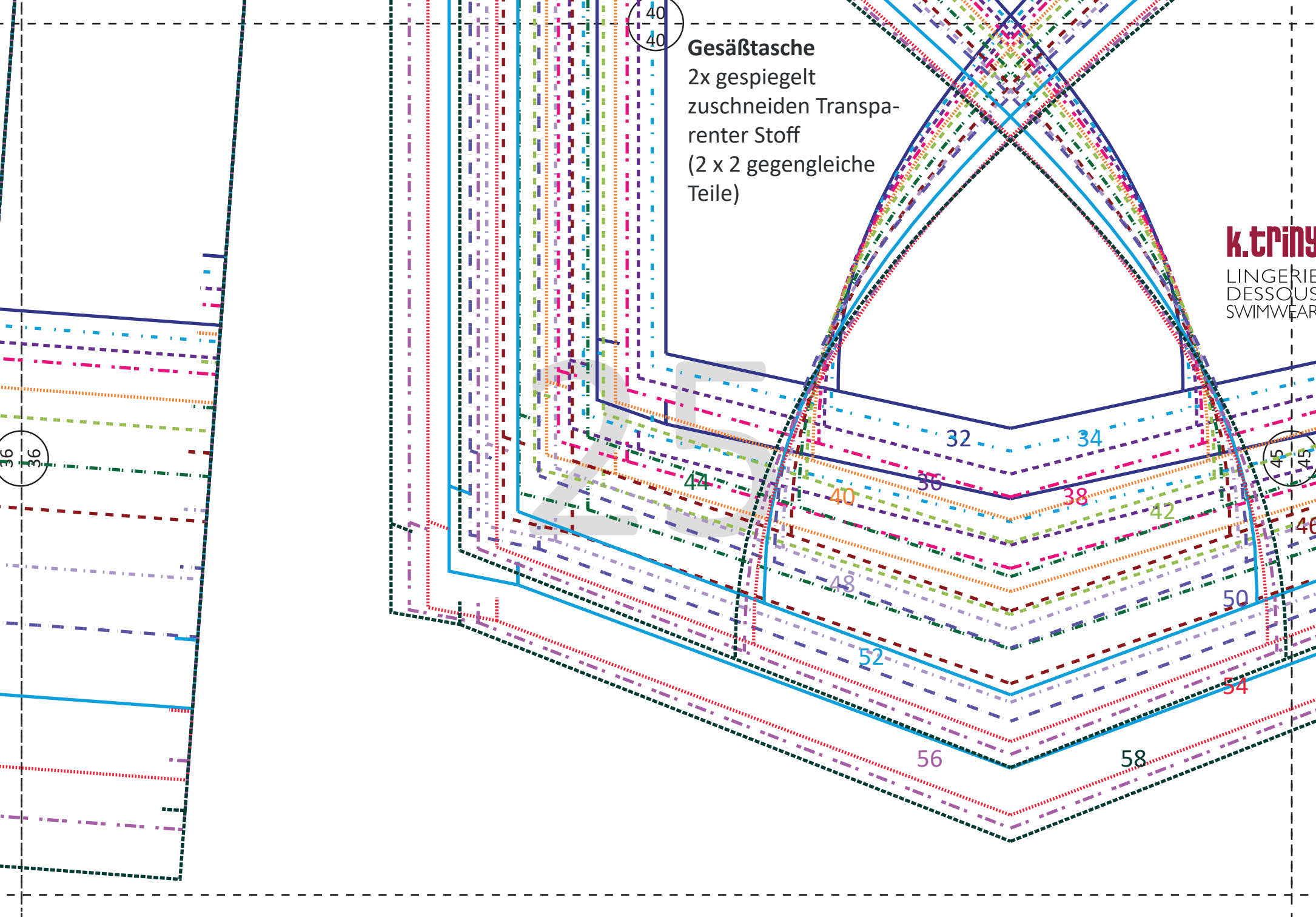
37
37

41
41





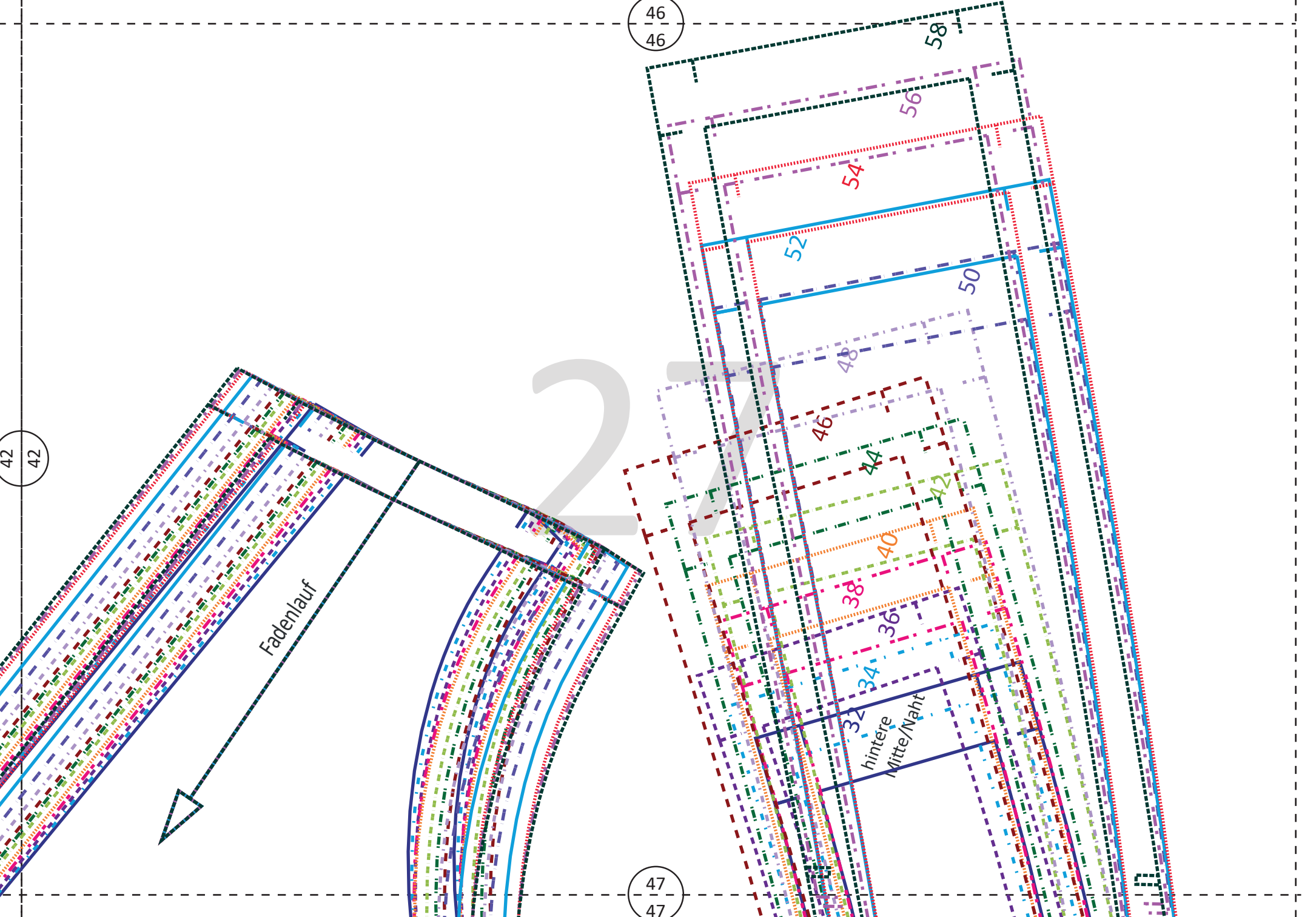




- 32
- 34
- 36
- 38
- 40
- 42
- 44
- 46
- 48
- 50
- 52
- 54
- 56
- 58

26





V3

#DemyClair
Tascheneingriff
1 x gespiegelt zuschneiden
(gegengleiche Teile)

k.tring*
LINGERIE
DESSOUS
SWIMWEAR

47

47

V3

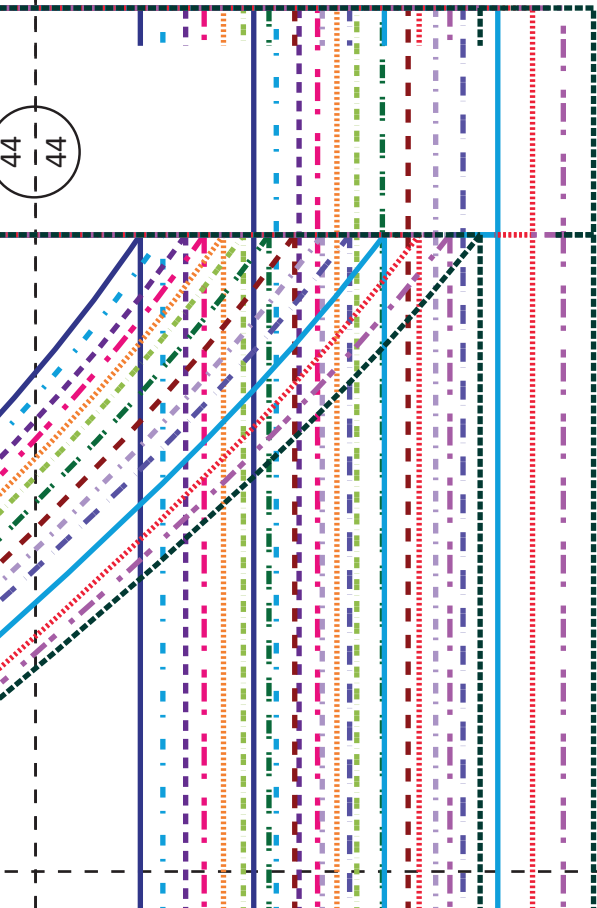
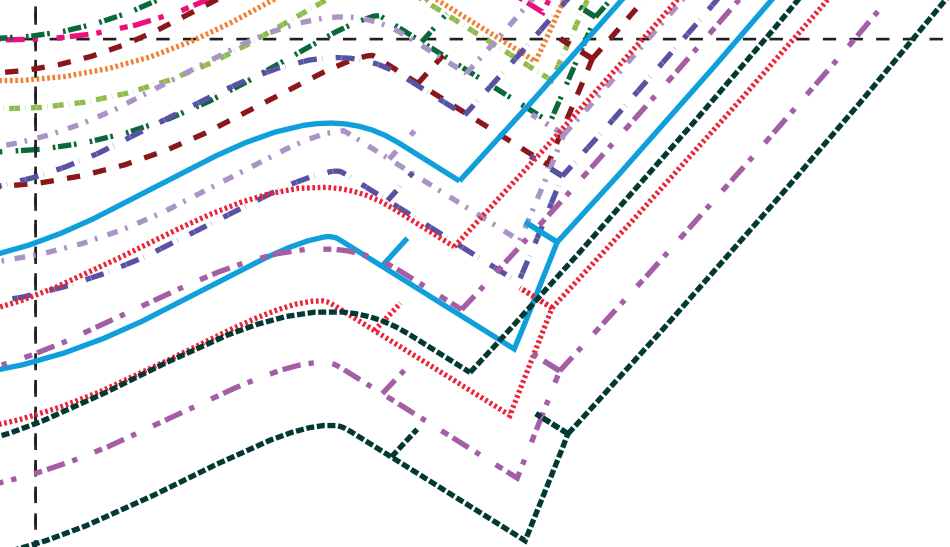
#DemyClair
Formbund
2 x gespiegelt
zuschneiden
(2 x 2 gegengl. Teile)

Kontrollzwick
Seitennaht

Kontrollzwick
Seitennaht

48

48

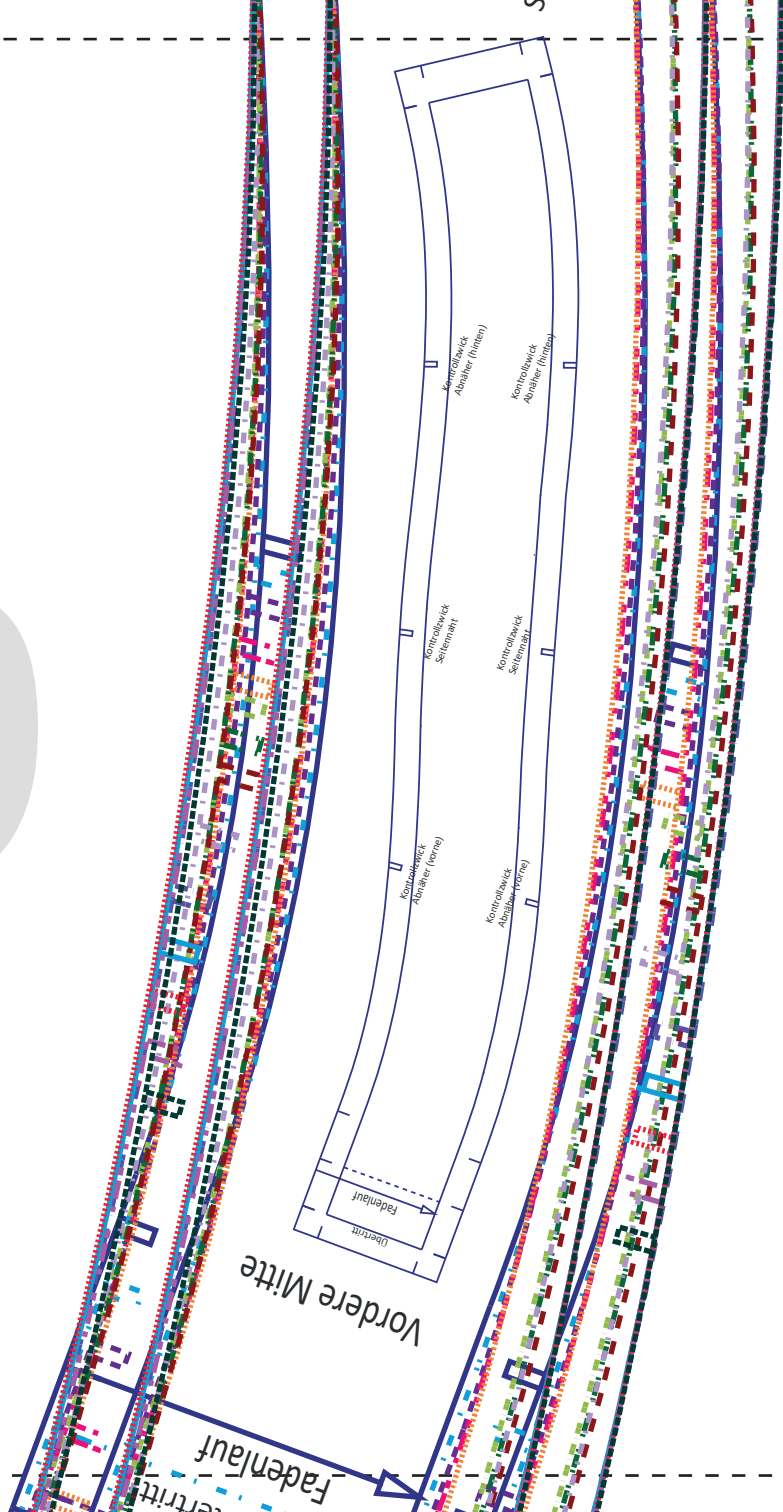


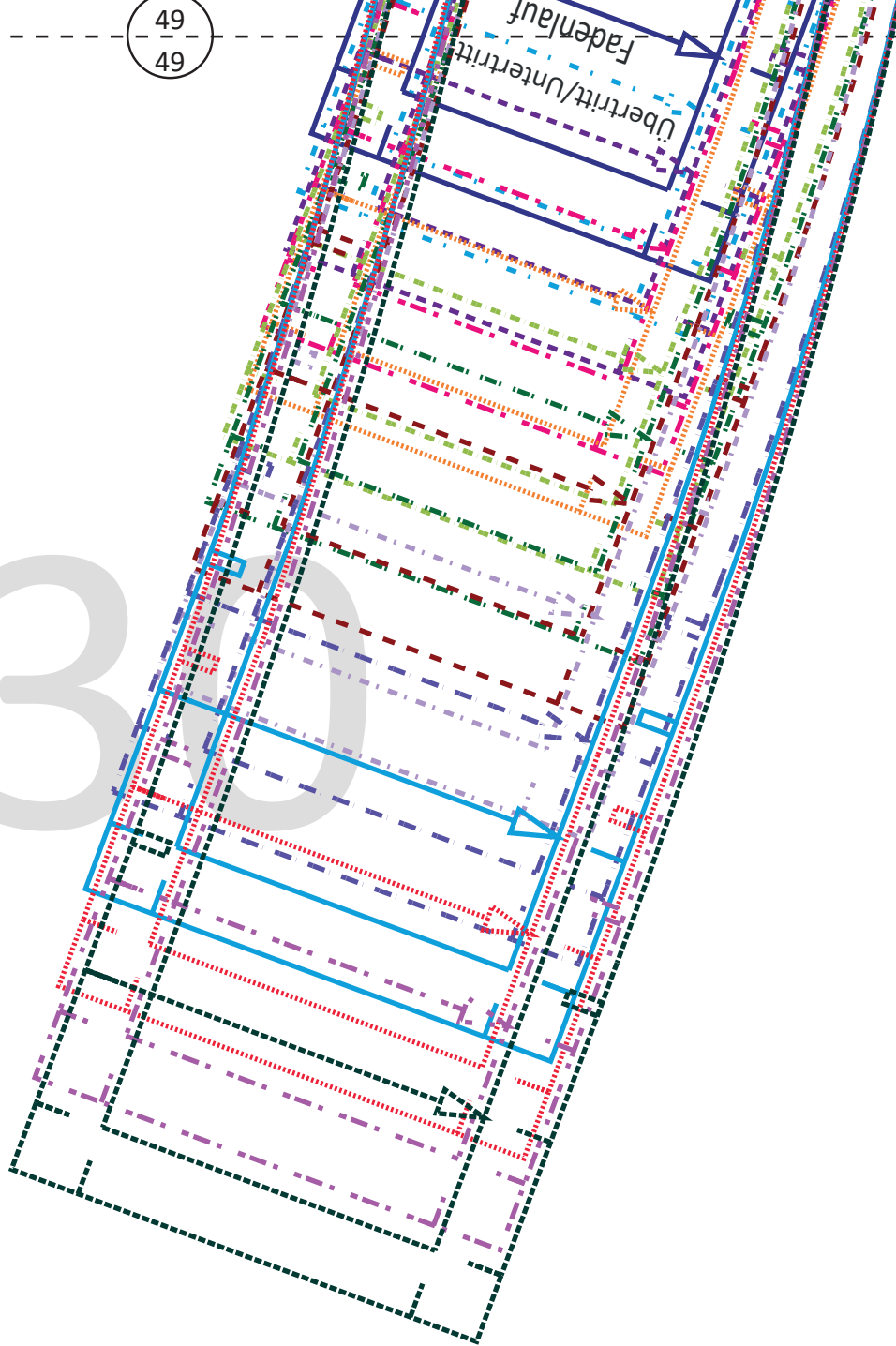
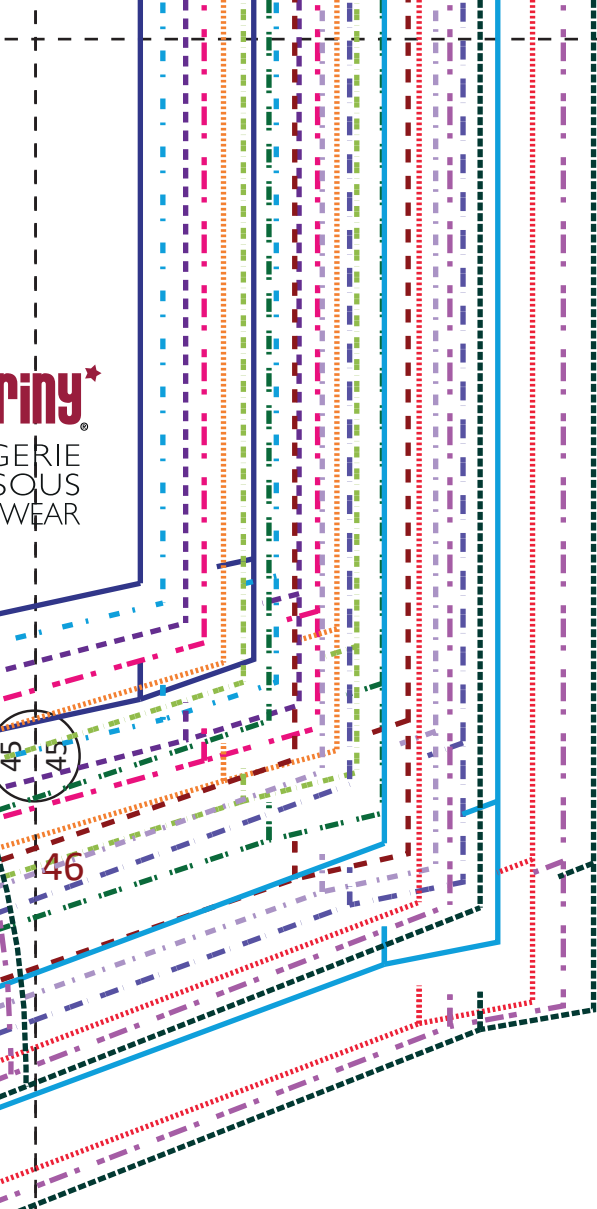
29

48
48

44
44

49
49





30